



Notch

NOTCH MATERIAL BUCKETS

23664 State Hwy. 4
Lake Henry, MN 56362
320-243-7248 • Fax: 320-243-7245
website: notchmfginc.com

Available Sizes

60", 66", 72", 78", 84", 90", 96", 102", 108", & 120"



Box 30" High x 42" Deep

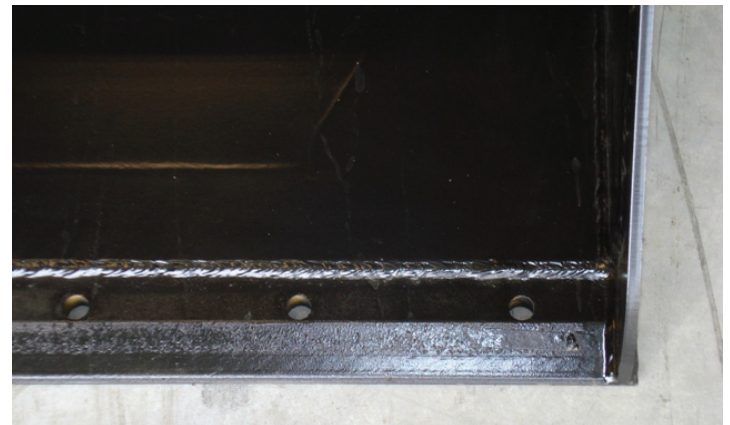
Recommended for loaders with operating capacity of 3000 lbs. or less

Constructed of high visibility rolled back

Constructed of high tensile steel

Capacities and measurements are approximate

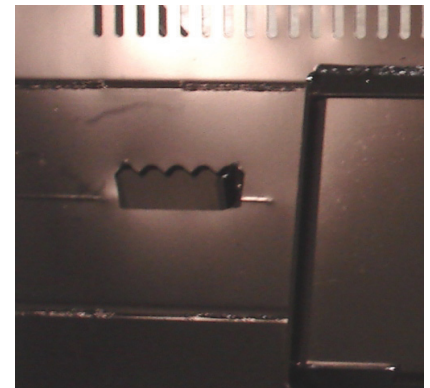
Rolled top design, no sharp corners, for a safe work environment



3/4" x 6" cutting edge with holes to accept bolt on cutting edge



Universal attachments standard, other attachments available



Step for easy access on both sides of bucket

Notch Manufacturing reserves the right to change its products or their specifications at any time without notice or obligation.

Notch Manufacturing Inc.

23664 State Hwy. 4 • Lake Henry, MN 56362 • 320-243-7248 • Fax: 320-243-7245 • website: notchmfginc.com